



Sempre



NC C134
ASSP ▲ Y=75%



S 8056
ASSP ▲ Y=34%



S 8052
ASSP ▲ Y=54%



Sempre



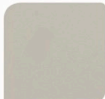
NC C134
ASSP ▲

Y=75%



S 8056
ASSP ▲

Y=34%



S 8052
ASSP ▲

Y=54%



Sempre



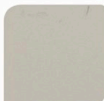
NC C134
ASSP ▲

Y=75%



S 8056
ASSP ▲

Y=34%



S 8052
ASSP ▲

Y=54%



Sempre



NC C134
ASSP ▲



S 8056
ASSP ▲



S 8052
ASSP ▲

Y=75%

Y=34%

Y=54%